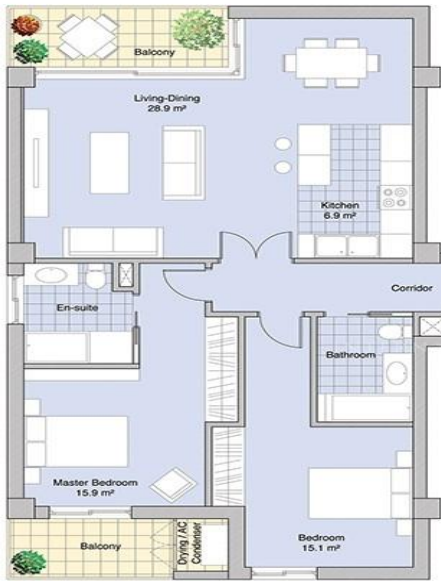


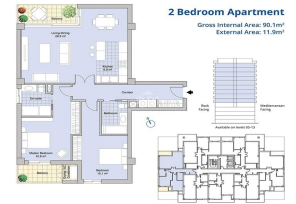
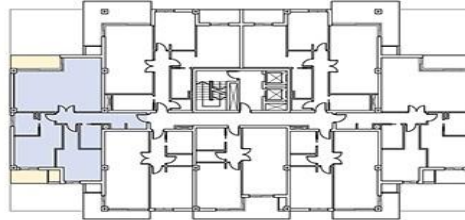
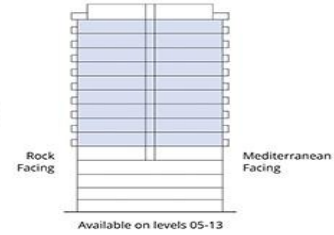


INTERNATIONAL HOMES



2 Bedroom Apartment

Gross Internal Area: 90.1m²
External Area: 11.9m²



CLEMENCE SUITES

£585,000

AVAILABLE

REF: GMGS4882 | APARTMENT IN

Property Details

Bedrooms:	2	Rates:	£189
Bathrooms:	2	Service Charges:	£756
Habitable Area:	90m ²	Exterior:	12m ²

Property Features

Balcony	Central Heating
Air Conditioning	Lift Access
Double glazing	Ensuite Bathroom
Fully Furnished	Communal Gym

Property Description

CLEMENCE SUITES

This amazing two bedroom, two bathroom with fully fitted kitchen featuring soft close doors and drawers, quality stone worktops illuminated by concealed LED lighting and top of the range appliances. The property is developed to the highest of standards. Oak engineered wood flooring and white lacquered skirting in living rooms. Generous fitted wardrobes with interior LED lighting strips in all bedrooms, master bedroom ...

GM International Homes Ltd
17 Tuckey's Lane
Gibraltar

Tel : +350 200 41110
Email : info@gmihomes.com

www.gmihomes.com