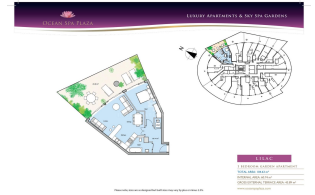
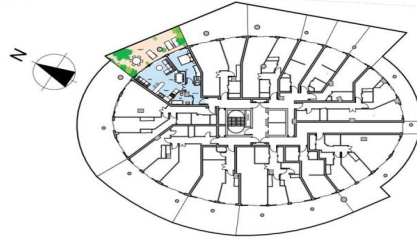
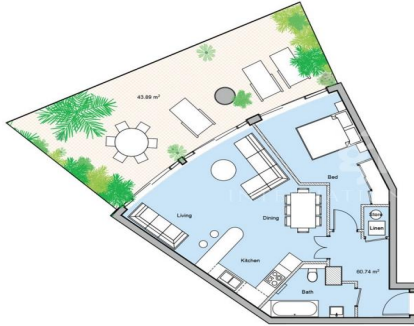




INTERNATIONAL HOMES

OCEAN SPA PLAZA

LUXURY APARTMENTS & SKY SPA GARDENS



LILAC
 1 BEDROOM GARDEN APARTMENT
 TOTAL AREA: 104.63 m²
 INTERNAL AREA: 60.74 m²
 GROSS EXTERNAL TERRACE AREA: 43.89 m²
 www.oceanspaplaza.com

Please note: sizes are as designed but built sizes may vary by plus or minus 2.5%

OCEAN SPA PLAZA

£2,000 PCM

AVAILABLE

REF: GMGR3990 | GARDEN APARTMENT IN GIBRALTAR

Property Details

Bedrooms:	1	Rates:	
Bathrooms:	1	Service Charges:	
Habitable Area:	61m ²	Exterior:	44m ²

Property Features

Terrace	Under floor heating
Communal Gardens	Fully Furnished
Communal Swim. Pool	Lift Access
Air Conditioning	Parking Space

Property Description

OCEAN SPA PLAZA - Garden Apartment

Fully fitted one bedroom, one bathroom Garden Apartment available to Rent. Apartment consists of 61m² offering ample space with all the luxury commodities available at Ocean Spa Plaza. Bathroom has high quality marble throughout, with a Stylish double-ended bath, heated floors and heated towel rail with no-mist mirror and make-up lighting. Kitchen is also fully fitted and offers granite surfaces. Warm natural wood flooring throughout living and bedroom areas with marble hallways. Apartment has an exterior area of 44m² offering great outdoor living.

For more information contact us on +35020041110 or email info@gmihomes.com



CONTACT US ON +350 200 41110



info@gmihomes.com