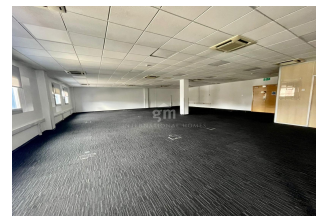




INTERNATIONAL HOMES



WATERPORT PLACE

£6,900 PCM

AVAILABLE

REF: GMGR4638

Property Details

Bedrooms: 0 **Rates:** £4,119
Bathrooms: 0 **Service Charges:** £2,617
Habitable Area: 236m2 **Exterior:**

Property Features

Air Conditioning kitchenette
Double glazing Carpets
Lift Access Allocated Parking
Centrally Located CCTV System

Property Description

Waterport Place office unit available for Rental

Unit has an internal area of 235.60m2, located on the third floor with easy lift access. The unit has its own Kitchenette and W.C.

Unit also offers allocated underground parking space. - LPS £16.75 per qtr

Service charges inclusive of parking space fees

GM International Homes Ltd
17 Tuckey's Lane
Gibraltar

Tel : +350 200 41110
Email : info@gmihomes.com

www.gmihomes.com