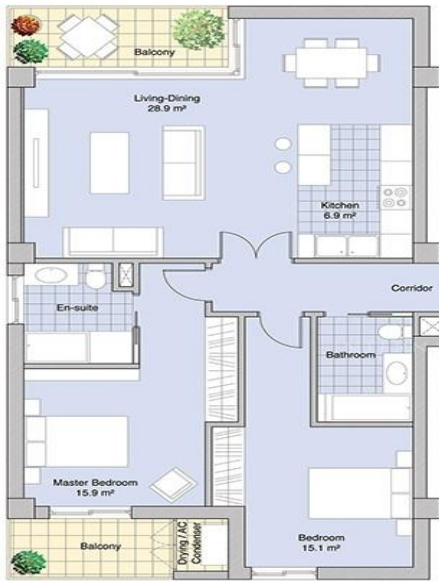


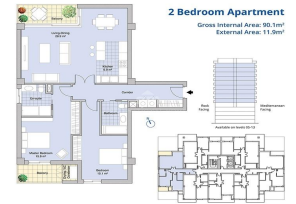
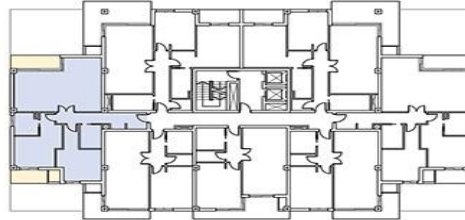
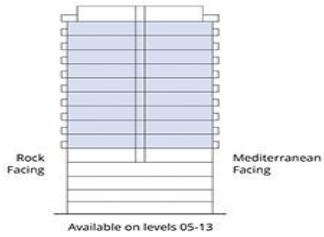


INTERNATIONAL HOMES



## 2 Bedroom Apartment

Gross Internal Area: 90.1m<sup>2</sup>  
External Area: 11.9m<sup>2</sup>



## CLEMENCE SUITES

£585,000

AVAILABLE

REF: GMGS4882 | APARTMENT IN

### Property Details

<b>Bedrooms:</b>	2	<b>Rates:</b>	£189
<b>Bathrooms:</b>	2	<b>Service Charges:</b>	£756
<b>Habitable Area:</b>	90m <sup>2</sup>	<b>Exterior:</b>	12m <sup>2</sup>

### Property Features

Balcony	Central Heating
Air Conditioning	Lift Access
Double glazing	Ensuite Bathroom
Fully Furnished	Communal Gym

### Property Description

#### CLEMENCE SUITES

This amazing two bedroom, two bathroom with fully fitted kitchen featuring soft close doors and drawers, quality stone worktops illuminated by concealed LED lighting and top of the range appliances. The property is developed to the highest of standards. Oak engineered wood flooring and white lacquered skirting in living rooms. Generous fitted wardrobes with interior LED lighting strips in all bedrooms, master bedroom ...

GM International Homes Ltd  
17 Tuckey's Lane  
Gibraltar

Tel : +350 200 41110  
Email : [info@gmihomes.com](mailto:info@gmihomes.com)

[www.gmihomes.com](http://www.gmihomes.com)